

# AcuReel 300 & 550

## Single & Double Side UV Exposure Roll to Roll

FPCB / Flex



Photo Chemical  
Milling



Photovoltaics



Touch Panel



AcuReel 300



AcuReel 550

LEDLight™

ColliLight™



## Solution For High-End Roll to Roll Exposure Processes

Resolution

Down to  
15µm | 0.6mil

Registration

±5µm | 0.2mil  
AW/AW

Throughput

Up to 8500  
images/day

High Savings

High Power  
UV LEDs



ALTIX  
AUTOMA-TECH™



# AcuReel 300      AcuReel 550

## Cleanliness Hood



New Unwinder / Winder with low tension material control & Anti-scratch material solution



Fully Intuitive & Friendly HMI

High Exposure Resolution

High Power UV Leds - Ultimate Cost Saving

LedLight Source: No Artwork Expansion

Stitching Function

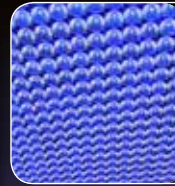
## UV Light Sources



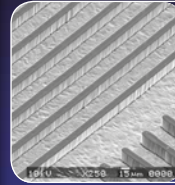
## AcuReel 300 & 550 Specifications

<b>APPLICATIONS</b>	FPCB / Flex • Photo Chemical Milling • Photovoltaics • Touch Panel	
<b>Process</b>	Inner Layers, Outer Layers & Coverlay / Soldermask / PSR	
<b>Exposure Area</b>		
- AcuReel 300	Up to 300mm x 650mm	• Up to 11.8" x 25.6"
- AcuReel 550	Up to 550mm x 650mm	• Up to 21.6" x 25.6"
<b>Web Thickness</b>	Down to 15µm + copper	• 0.6mil
<b>RESOLUTION</b>	15µm/15µm • 0.6mil/0.6mil (Line & Space) for dry film <sup>(1)</sup> Min Dam 50µm • 2mil for Soldermask <sup>(1)</sup>	
<b>Light Engine</b>	ColliLight™ 5kW & 8kW	LedLight™
<b>Light Intensity</b>	≥25mW/cm <sup>2</sup> (5kW lamp) ≥40mW/cm <sup>2</sup> (8kW lamp)	Up to 55mW/cm <sup>2</sup>
<b>Collimation</b>	≤ 1.5° <sup>(2)</sup>	≤ 1.6° <sup>(2)</sup>
<b>Declination</b>	≤ 1° <sup>(2)</sup>	No declination <sup>(2)</sup>
<b>Uniformity</b>	≥ 80% <sup>(3)</sup>	≥ 85% <sup>(3)</sup>
<b>Dry Film Resist</b>	For all types of dry film	
<b>Coverlay / Soldermask / PSR</b>	For all types of solder resist: green, white, blue, red, black...	
<b>Exposure Method</b>	Double side or single side	
<b>Exposure Contact</b>	Soft or hard contact vacuum – CMI™ available	
<b>ALIGNMENT</b>	±5µm / 0.2mil AW/AW (after vacuum) ±8µm / 0.32mil AW/Web (after vacuum) ±3µm / 0.12mil Repeatability (after vacuum)	
<b>CCD Cameras</b>	4 cameras for I/L & O/L 4 cameras + 4 cameras for Coverlay / Soldermask / PSR	
<b>Mask</b>	Compatibility Glass Mask & Film Mask	
<b>THROUGHPUT</b>	Up to 8500 images/day <sup>(4)</sup>	
<b>Batch Changeover</b>	≤ 5 minutes - Masks & Settings change	
<b>SOFTWARE</b>	ALTIX SUITE with 17" touch screen	
<b>Languages</b>	English, Simplified & Traditional Chinese, Korean, German, French...	
<b>HIGH YIELD</b>		
<b>Air Cleanliness</b>	Hepa filter class 100 & Clean Dry Air Network (CDA)	
<b>Features</b>	Tacky roller (web cleaner) including deionization system	
<b>Construction</b>	Stainless steel	
<b>GENERAL UTILITIES</b>		
<b>Power Supply</b>	220/400/480V • 3 Phases • 50/60Hz	
<b>Air Supply</b>	6~7 bars with 1.5 m <sup>3</sup> /min	
<b>Power Consumption</b>	17kW (2x5kW lamps) 25kW (2x8kW lamps)	6kW with LedLight™
<b>Water Supply</b>	20-30 l/min @3 bars (for 2x5kW unit) 50-80 l/min @3 bars (for 2x8kW unit)	20-30 l/min @3 bars
<b>UV source cooling</b>	Air cooled / Close Loop Lamp Cooling (CLLC)	
<b>Machine Weight</b>	4,750kg • 10,450lbs      5,250kg <sup>(5)</sup> • 11,550lbs <sup>(5)</sup>	
<b>Dimensions</b>		
- With Contact Rollers	4,983mm (L) x 2,375mm (W) x 2,350mm (H) • 196" (L) x 94" (W) x 93" (H)	
- With Pulling Table	4,225mm (L) x 2,378mm (W) x 2,350mm (H) • 166" (L) x 94" (W) x 93" (H)	

(1) depending on photoresist, surface preparation & DES process • (2) depending on max. exposure area  
(3) depending on exposure area - calculation: Min/Max • (4) depending on process • (5) with cabins



**Best Cost / Performance Ratio:**  
Advanced UV Led Solution provides the Best Resolution at the Lowest Cost per Image



**High Resolution:**  
15µm (Line & Space)



**High Throughput:**  
> 8 500 Images per Day



**High Registration Capabilities:**  
±5µm Artwork to Artwork



**High Production Yield:**  
Low Tension Material Control & Anti-Scratch Material Solution



**Stitching Function:**  
< 20µm  
Patented Hardware & Algorithm to provide a perfect Stitching for Image « N » to Image « N+1 »



# ALTIX

**Manufacturing, Sales & Service:**

Altix France – HQ

Email: central@altix.fr

**Direct Sales & Service:**

Asia: Altix China

Shanghai, Kunshan,

Zhuhai Offices

Email: central@altix.cn

**North America:**

Altix NA, Inc.

West Coast, Middle West and East Coast

Email: central@altix.us

**Imaging with us!**



www.altix.fr

Designed by ACFT Bureau d'études - ACUREEL 300&550 EN - y 18 / w 46 - All data mentioned on this document are not contractual and may be changed at anytime